



Co-funded by the  
Erasmus+ Programme  
of the European Union



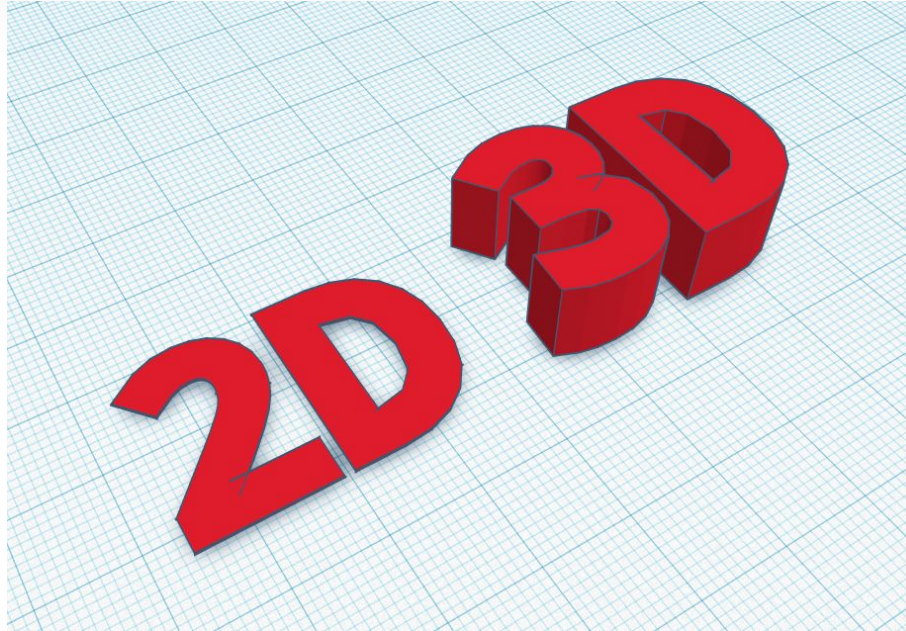
# INTRO TO 3D PRINT AND DESIGN

 **Robo.com.cy**  
EDUCATIONAL & RESEARCH ROBOTICS

Promoting youth employment in remote areas in Jordan -(Job Jo)

598428-FPP-1-2018-1-IO-FPPKA2-CBHE-IP

# WHAT IS 3D



# 3D PRINTER



# FOR PRODUCTION?



# IN BOARD GAMING





# 3D DESIGN



[www.tinkercad.com](http://www.tinkercad.com)

# ONLINE LIBRARIES



<https://www.tinkercad.com/search>

<https://www.thingiverse.com/newest>

<https://grabcad.com/library>

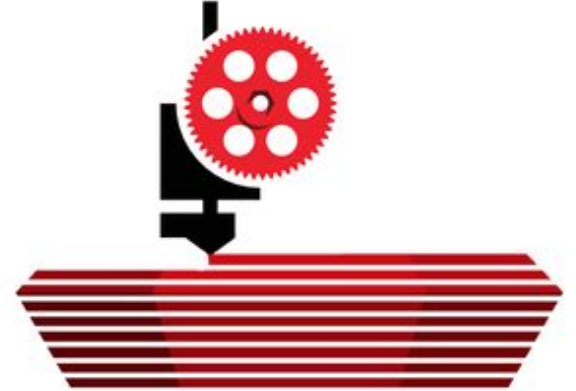
# BASIC PLASTICS

- **PLA** - MODELS/INDOOR - EASY TO PRINT
- **ABS** - MECHANICAL USE - HIGH AMBIENT TEMP NEEDED
- **PETG** - MECHANICAL USE - EASY TO PRINT
- **TPU** - FLEXIBLE - HARD TO PRINT





# SLICING



# SLICING SOFTWARE

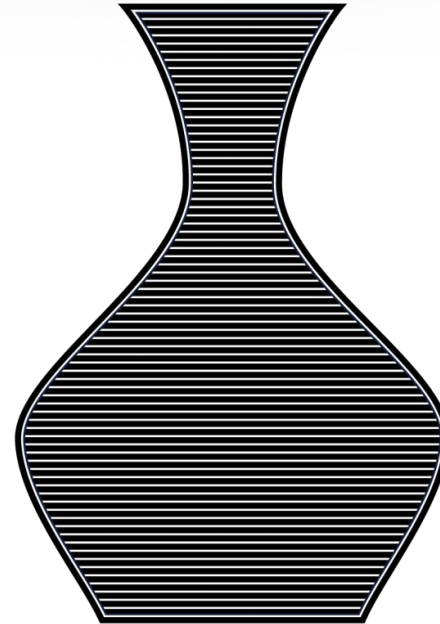
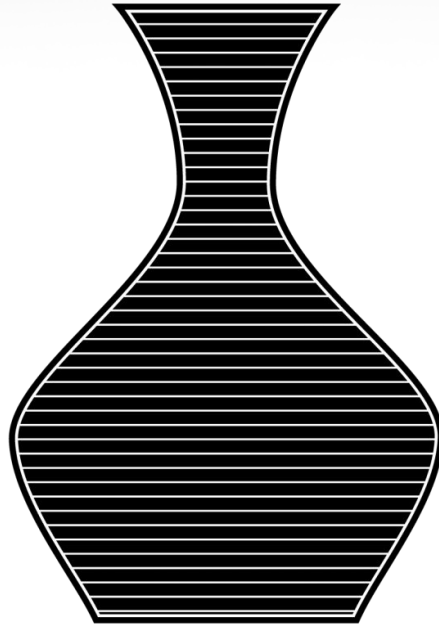
PRUSA SLICER



CURA



# LAYER HEIGHT



# LAYER HEIGHT

LAYER HEIGHT  
0.20 mm

LAYER HEIGHT  
0.10 mm

SMOOTH VARIABLE  
LAYER HEIGHT  
0.07 ~ 0.25 mm

1h : 50min

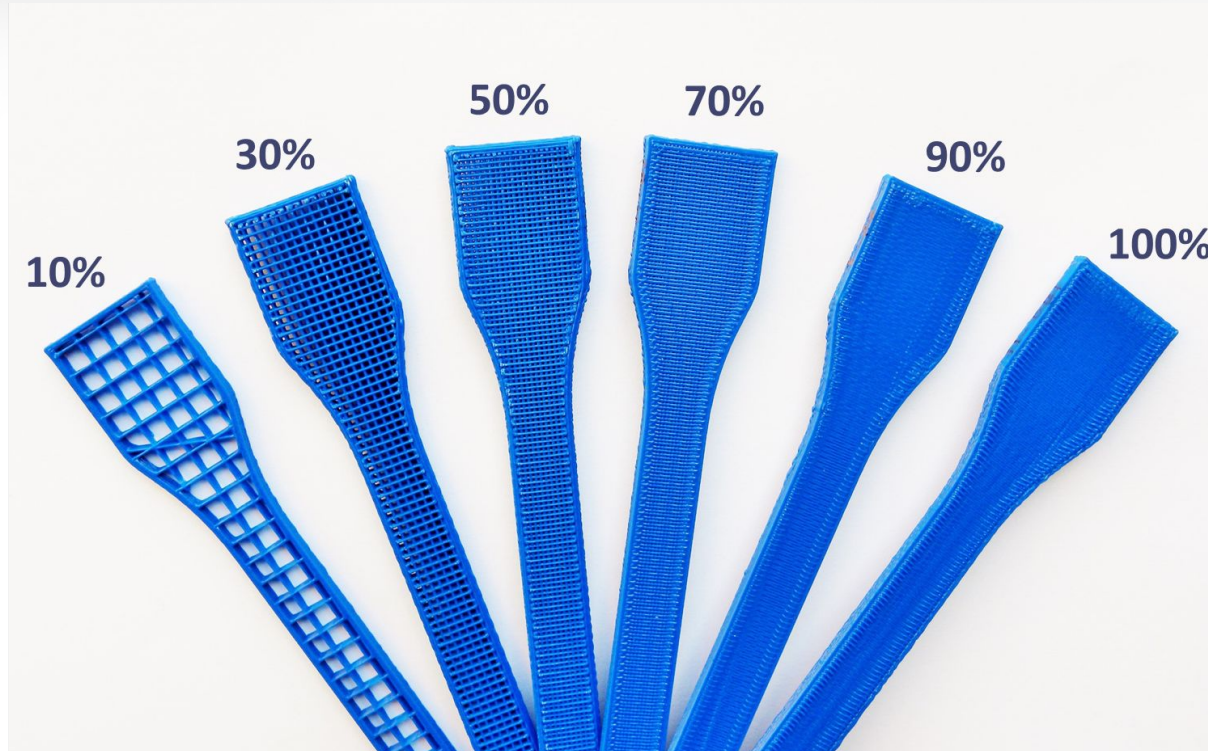
3h : 45min

2h : 20min

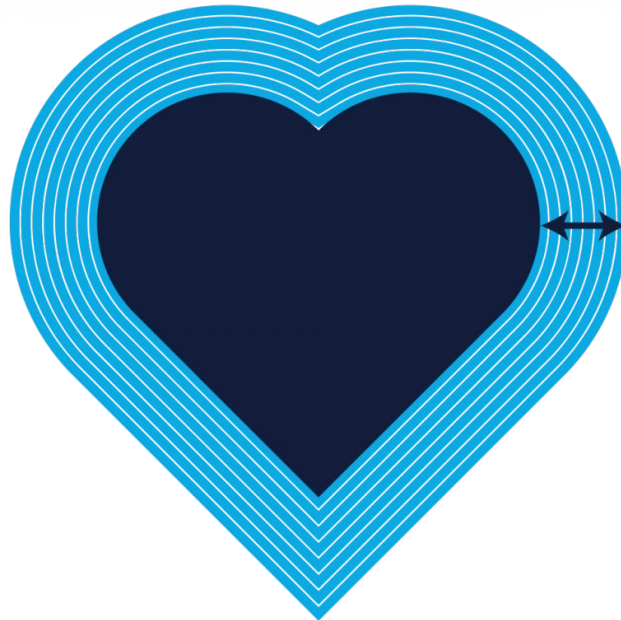


MARVIN SCALED TO 200%

# INFILL



# BRIM



-  Model
-  Brim
-  Brim width



# SUPPORTS

## MESHMIXER SUPPORTS

PRUSA  
RESEARCH  
by JOSE PRUSA

